

HORIZON 23

4 2 1 2

Like a fresh sea breeze, classic modern coastal design flows right through this home.

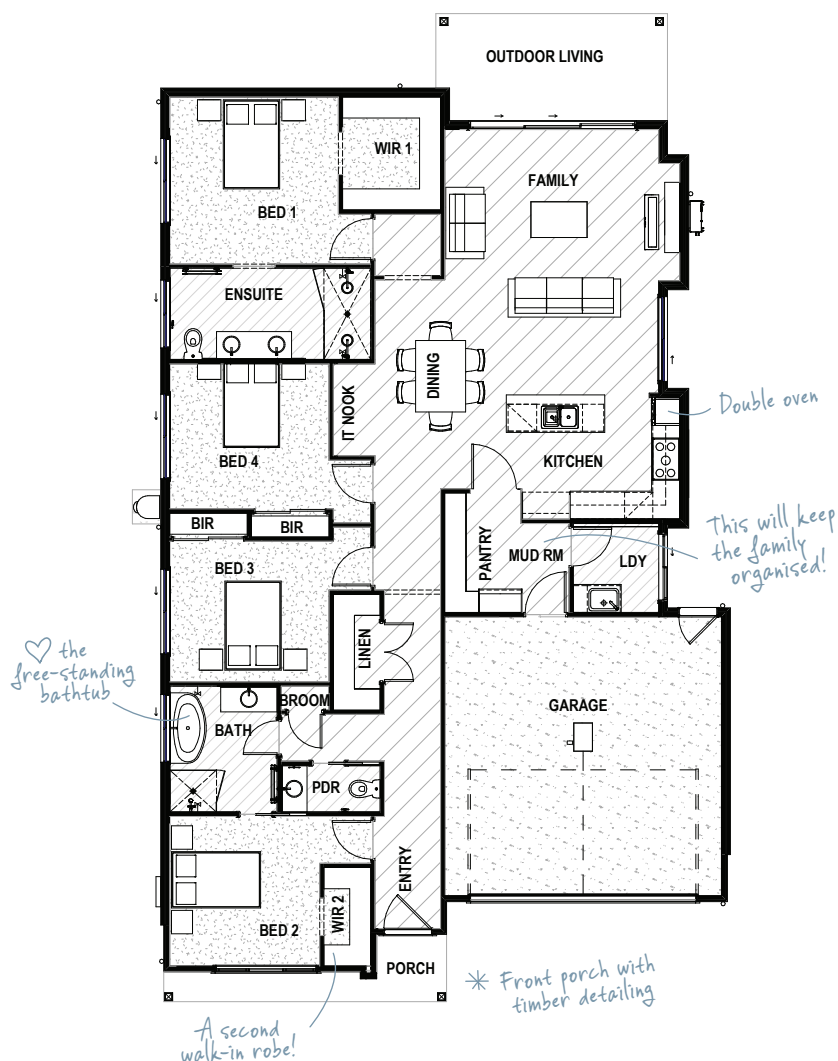
From the front porch, to the mud room and walk through pantry, to the open spaces that drift out to the outside living, it's easy to picture a life that just goes with the flow.

HOME DIMENSIONS

Bedroom 1	3.6 x 3.6m
Bedroom 2	3.2 x 3.2m
Bedroom 3	3.4 x 3.0m
Bedroom 4	3.4 x 3.1m
Family	4.6 x 4.0m
Dining	2.8 x 4.5m
Outdoor Living	4.8 x 2.2m
Double Garage	5.9 x 6.0m
House width [^]	12.1m
House length [^]	21.0m

TOTAL FLOOR AREA 219.3m²
(incl. Outdoor Living)

[^]measured external wall to external wall



DRHomes.com.au Call 07 3801 1328 Email sales@drhomes.com.au

DRHomes
the home team advantage™

Floorplan has been prepared for illustrative purposes and should be used as a guide only. Plans are not to scale and all images, renders, and inclusions shown are indicative only. © DRHomes Pty Ltd. QBCC Licence No. 1165013