



PACIFIC 26

4 2 2 2

Step onto the classic front porch and this home transports you to a place where you can relax, slow down and appreciate what's important in life.

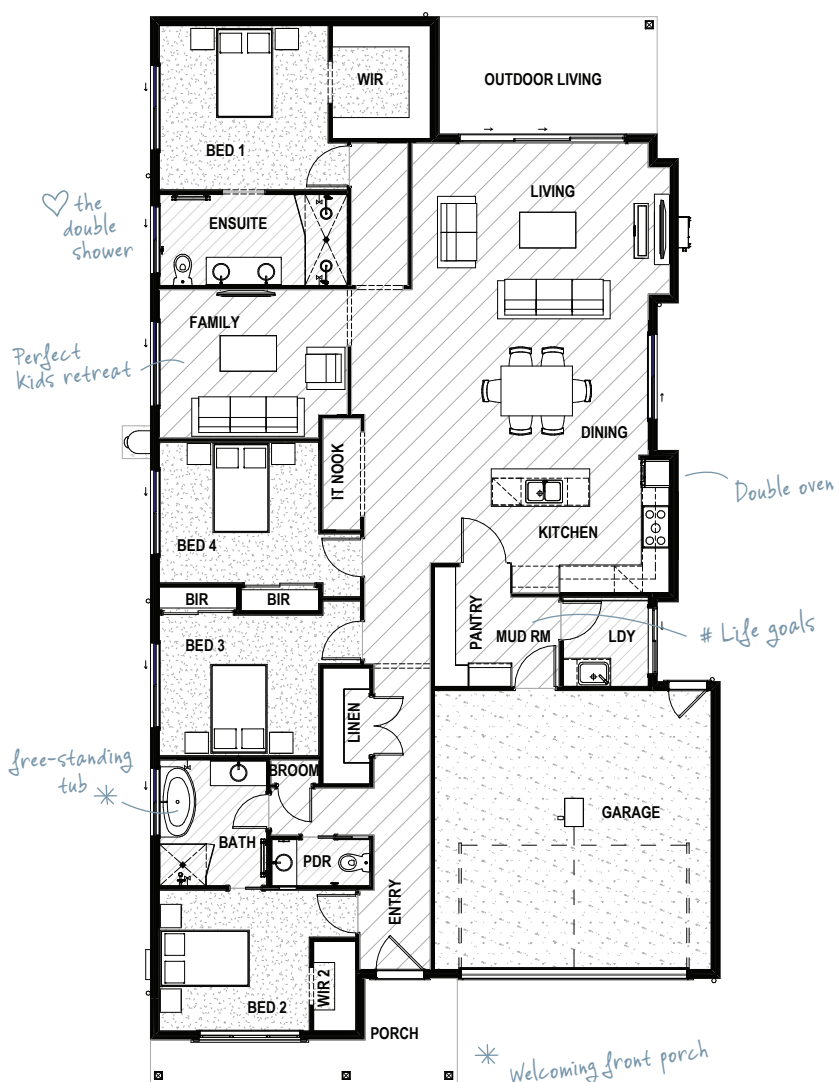
Generously designed with open, airy spaces and smart, organised places, the Pacific really is the complete package.

HOME DIMENSIONS

Bedroom 1	3.6 x 3.5m
Bedroom 2	3.2 x 3.0m
Bedroom 3	3.4 x 3.0m
Bedroom 4	3.4 x 3.0m
Living	5.0 x 3.8m
Dining	5.0 x 3.2m
Family	4.0 x 3.2m
Outdoor Living	4.7 x 2.5m
Double Garage	5.9 x 6.0m
House width [^]	12.1m
House length [^]	22.7m

TOTAL FLOOR AREA 247.8m²
(incl. Outdoor Living)

[^]measured external wall to external wall



DRHomes.com.au Call 07 3801 1328 Email sales@drhomes.com.au

DRHomes
the home team advantage™

Floorplan has been prepared for illustrative purposes and should be used as a guide only. Plans are not to scale and all images, renders, and inclusions shown are indicative only. © DRHomes Pty Ltd. QBCC Licence No. 1165013