



AIRLIE 19

4 2 1 2

This light and airy home has been designed to work hard so that you don't have to.

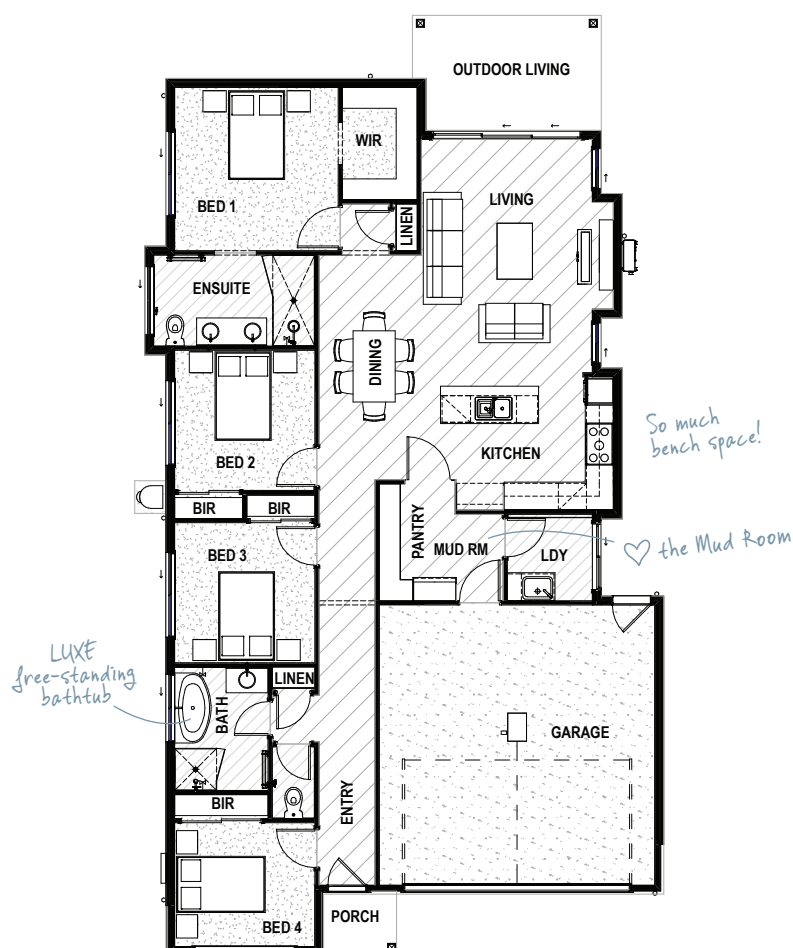
Spacious open plan living combines with organised spaces like the walk-through pantry/mud room to create a home that 'works' on every level.

HOME DIMENSIONS

Bedroom 1	3.5 x 3.5m
Bedroom 2	3.0 x 3.0m
Bedroom 3	3.0 x 3.0m
Bedroom 4	3.0 x 2.7m
Living	3.7 x 4.4m
Dining	2.6 x 4.8m
Outdoor Living	3.9 x 2.4m
Double Garage	5.9 x 6.0m
House width [^]	10.6m
House length [^]	19.9m

TOTAL FLOOR AREA 183.4m²
(incl. Outdoor Living)

[^]measured external wall to external wall



DRHomes.com.au Call 07 3801 1328 Email sales@drhomes.com.au

DRHomes
the home team advantage™

Floorplan has been prepared for illustrative purposes and should be used as a guide only. Plans are not to scale and all images, renders, and inclusions shown are indicative only. © DRHomes Pty Ltd. QBCC Licence No. 1165013