

ATLANTIC 26

 4
  2
  2
  2

With crisp, contemporary lines on the outside and oceans of space on the inside, this home feels as good as it looks.

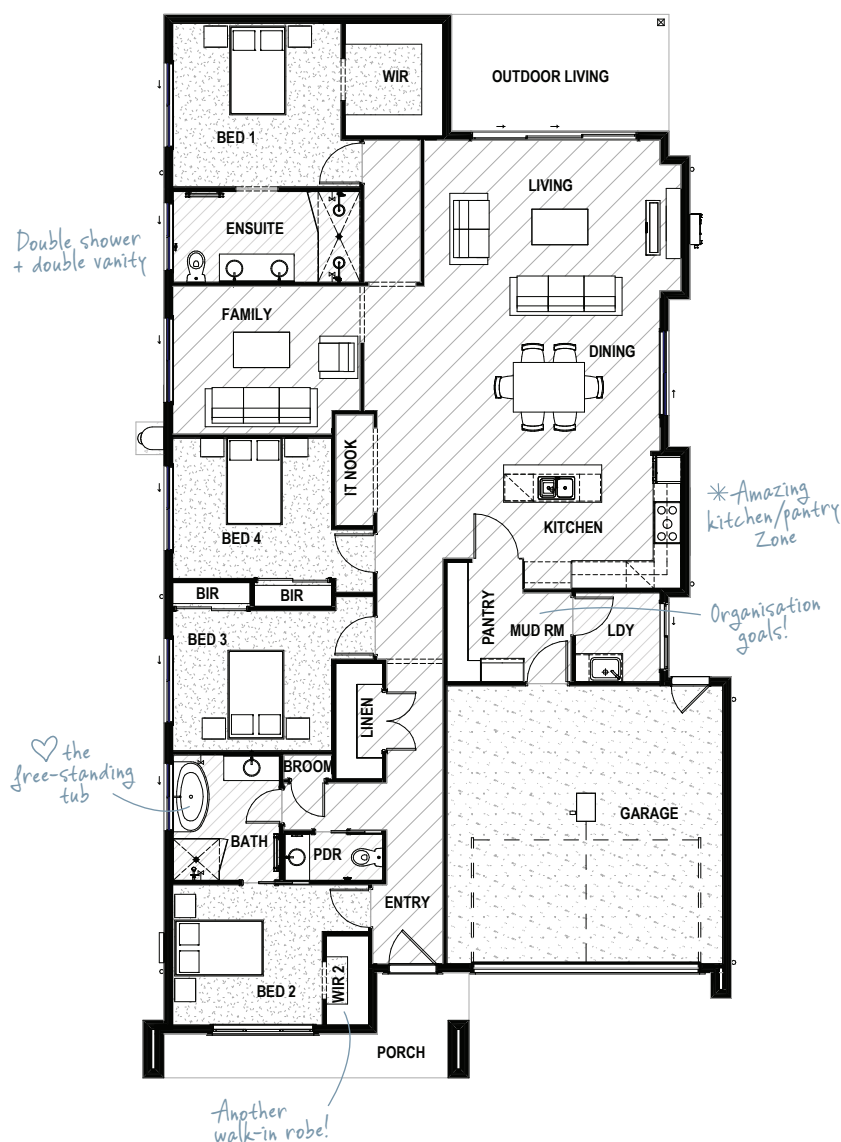
Explore the plan with an eye for detail and you'll spot more than a few thoughtful inclusions designed to make life a little bit easier and a little bit breezier.

HOME DIMENSIONS

| | |
|---------------------------|------------|
| Bedroom 1 | 3.6 x 3.5m |
| Bedroom 2 | 3.2 x 3.0m |
| Bedroom 3 | 3.4 x 3.0m |
| Bedroom 4 | 3.4 x 3.0m |
| Living | 5.0 x 3.8m |
| Dining | 5.0 x 3.2m |
| Family | 4.0 x 3.2m |
| Outdoor Living | 4.7 x 2.5m |
| Double Garage | 5.9 x 6.0m |
| House width [^] | 12.1m |
| House length [^] | 22.7m |

TOTAL FLOOR AREA 248.5m²
(incl. Outdoor Living)

[^]measured external wall to external wall



DRHomes.com.au Call 07 3801 1328 Email sales@drhomes.com.au

DRHomes
the home team advantage™

Floorplan has been prepared for illustrative purposes and should be used as a guide only. Plans are not to scale and all images, renders, and inclusions shown are indicative only. © DRHomes Pty Ltd. QBCC Licence No. 1165013