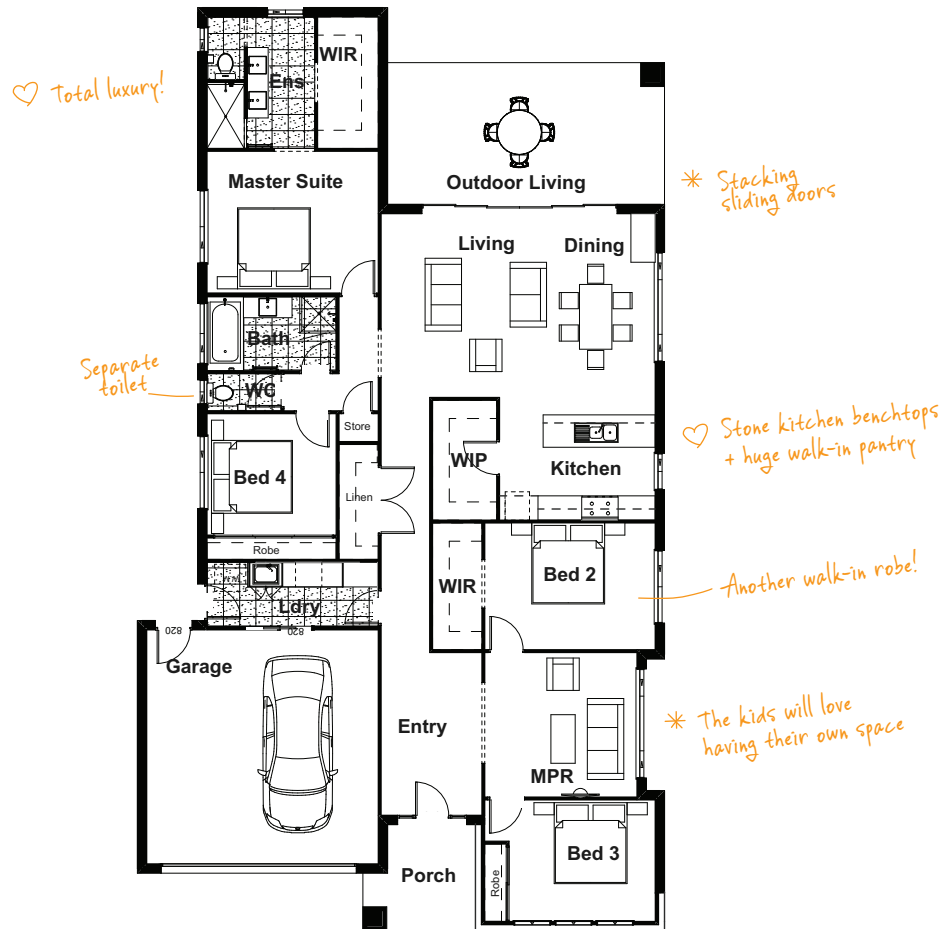


WESTHAVEN 28 MODERN

🛏️ 4 🚿 2 🛋️ 2 🚗 2

The Westhaven takes it to the next level with understated, relaxed Hamptons style and carefully-considered details that give everyday living a sense of 5-star luxury.

TOTAL FLOOR AREA : 255.2m² (incl. Outdoor Living)



HOME DIMENSIONS

Master Suite	3.5 x 4.2m	Outdoor Living	6.7 x 3.5m
Bedroom 2	3.2 x 3.7m	Double Garage	5.7 x 5.8m
Bedroom 3	3.0 x 3.6m	House width*	13.0m
Bedroom 4	3.0 x 3.2m	House length*	22.8m
Living	5.0 x 3.3m	Total floor area	255.2m ²
Dining	5.0 x 3.3m	(incl. Outdoor Living)	
Multi-Purpose Room	3.7 x 3.5m		

*measured brick to brick



Contact us today!

P 07 3801 1328 E sales@drhomes.com.au DRHomes.com.au

DRHomes
the home team advantage™