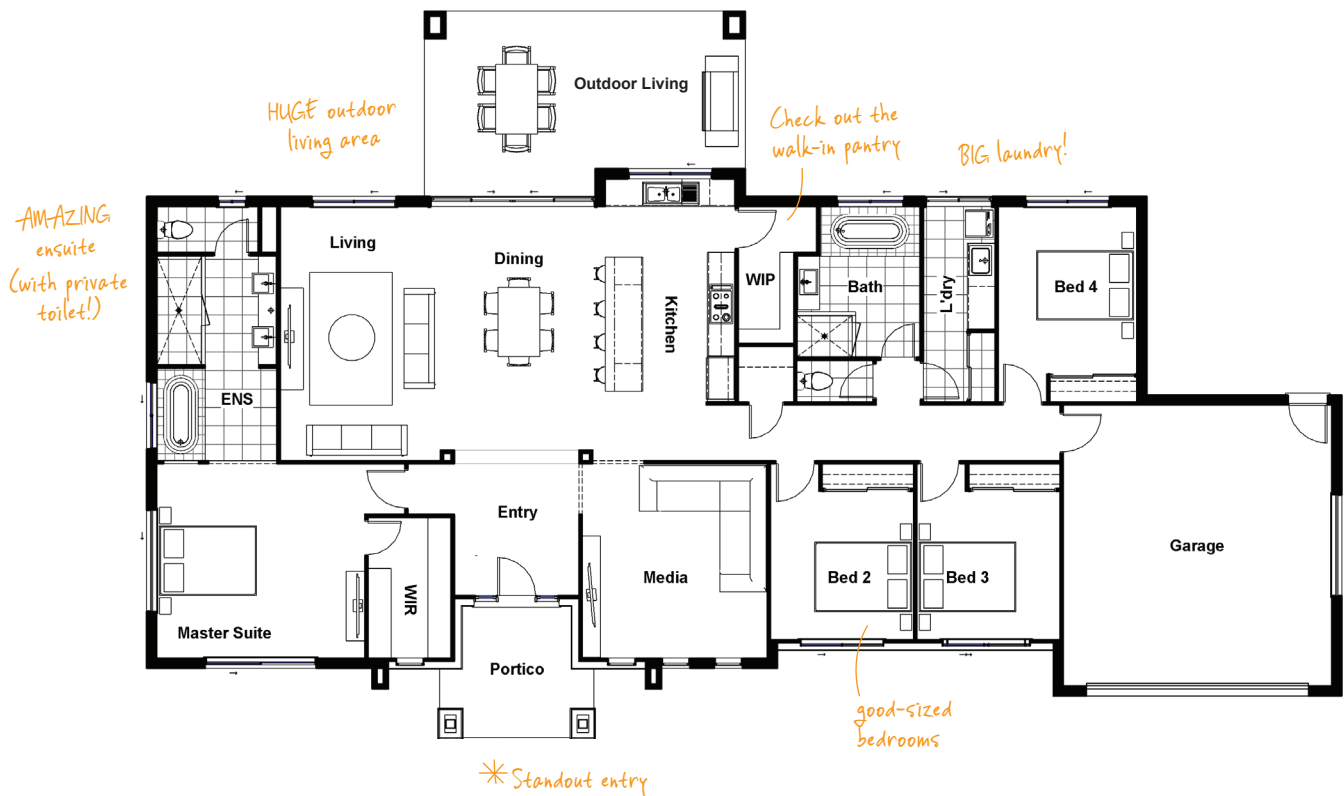


WOODCREST 30 MODERN

4 2 2 2

A large, thoughtfully designed home, the Woodcrest really does deliver on so many levels with generous rooms and fantastic, family-friendly details like the huge walk-in pantry.

TOTAL FLOOR AREA : 280.3m² (incl. Outdoor Living)



HOME DIMENSIONS

Master Suite	4.2 x 4.5m	Outdoor Living	4.0 x 6.9m
Bedroom 2	3.2 x 3.1m	Garage	6.0 x 5.7m
Bedroom 3	3.2 x 3.1m	House width [^]	25.9m
Bedroom 4	3.6 x 3.0m	House length [^]	15.7m
Living	5.5 x 3.5m	Total floor area	280.3m ²
Dining	5.5 x 3.2m	(incl. Outdoor Living)	
Media	4.2 x 4.0m	[^] measured brick to brick	



Contact us today!

P 07 3801 1328 E sales@drhomes.com.au DRHomes.com.au

DRHomes
the home team advantage™